

World Leader in Sophisticated Packaging Systems*MT Manual Top and Bottom Drive***series overview**

The BestPack® MTD Series are Semi-Automatic Adjustable Tape Carton Sealers with a new telescopic mast design that allows for a wider box range and better sealing stability.

The MTD system provides light to heavy duty carton sealing. These units are four-belt driven and come standard with a manual, self-centering mechanism that permits the operator to quickly center the carton and the tape.

All systems incorporate our exclusive pop out pressure sensitive "High Speed" tape heads with patented tab adjustment.

major features

- **Telescopic Dual Mast Design**
- **Designed for Uniform Applications**
- **4 Belts - 2 Top and 2 Bottom Belts**
- **Adjustable Bed Height from 23.0" to 29.1"**
- **Extra 4" Height Adjustment Available on Upper Assembly**
- **Height Adjustment on either side of machine**
- **Box Top Compression Unit**
- **Tape Roll Lengths: 1000 yd., 1500 yd., 2000 yd.**
- **Heavy Duty Frame**
- **UL Approved Electrical Parts**
- **Rugged Construction**
- **Guide Rail Centering Mechanism**
- **3" Model Capable of Interchanging 2" or 3" Tape Heads**
- **Cost Effective**

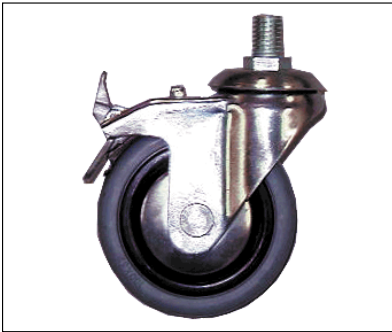
standard features

- **Exclusive Pop-out pressure sensitive "high speed" tape head with patented tab adjustment and noise reduction arm**
- **Adjustable Bed Height from 24.5" to 30.00"**
- **Operation Manual**

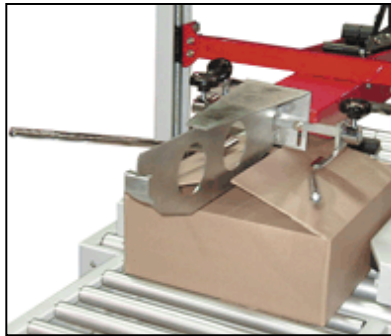
World Leader in Sophisticated Packaging Systems

optional features

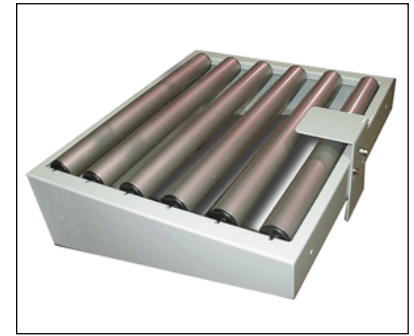
- Spare Parts Kit
- High Speed Motor Upgrade (Up to 125 ft./mm.)
- Motorized Height Adjustment
- Interlock Safety Gates
- Low or No Taper Sensor
- Stainless steel



Locking Castors



3 Flap Folder



Infeed/Exit Conveyor w/ Stabilizer

machine & carton specifications

- Power Requirements: 110 Volts 60 Hz
- Speed: Up to 40 cartons/minute
- Tape Head: Standard: 2"; Available: 3"

series comparison table

Model	Machine Dimensions	Carton Range	Cartons/Min.	Weight (lbs.)
MTD 22-2 2" tape head	(35.5") x (29.0") x (52.2")	(6.0"-U) x (6.5"-20.0") x (4.5"-20.0")	Up to 40	245
MTD 22-3 3" tape head	(35.5") x (29.0") x (52.2")	(6.0"-U) x (7.5"-20.0") x (4.5"-20.0")	Up to 40	245
MTD 33-3 3" tape head	(35.5") x (43.75") x (67.2")	(6.0"-U) x (7.5"-30.0") x (3.5"-30.0")	Up to 40	348

* All specifications capable of customization or subject to change without notice